

QUIZ (GUIDELINES)

- PLEASE DON'T USE MOBILES FOR ONLINE HELP
- DON'T SPEAK OUT OF TURN
- PLEASE RAISE YOUR HAND TO GIVE THE ANSWER
- IT'S NOT ABOUT WINNING OR LOSING – ITS ABOUT PARTICIPATION AND LEARNING
- LOT OF CARE HAS BEEN TAKEN TO PRESENT ACCURATE AND AUTHENTIC HISTORY. STILL, WE MAY HAVE MADE A MISTAKE AND APOLOGIZE UPFRONT FOR ANY MISTAKE(S) IN HISTORICAL FACTS. OBJECTIVE IS TO SPREAD THE AWARENESS ABOUT DIVERSITY OF PEOPLE AND PLACES GURU NANAK DEV JEE VISITED TO SPREAD THE MESSAGE OF GURMAT.

ROUND 1 – FOUR UDASIS AND FAMOUS PEOPLE

EVERY TEAM WILL BE ASKED 3 QUESTIONS

2 POINTS FOR CORRECT ANSWER.

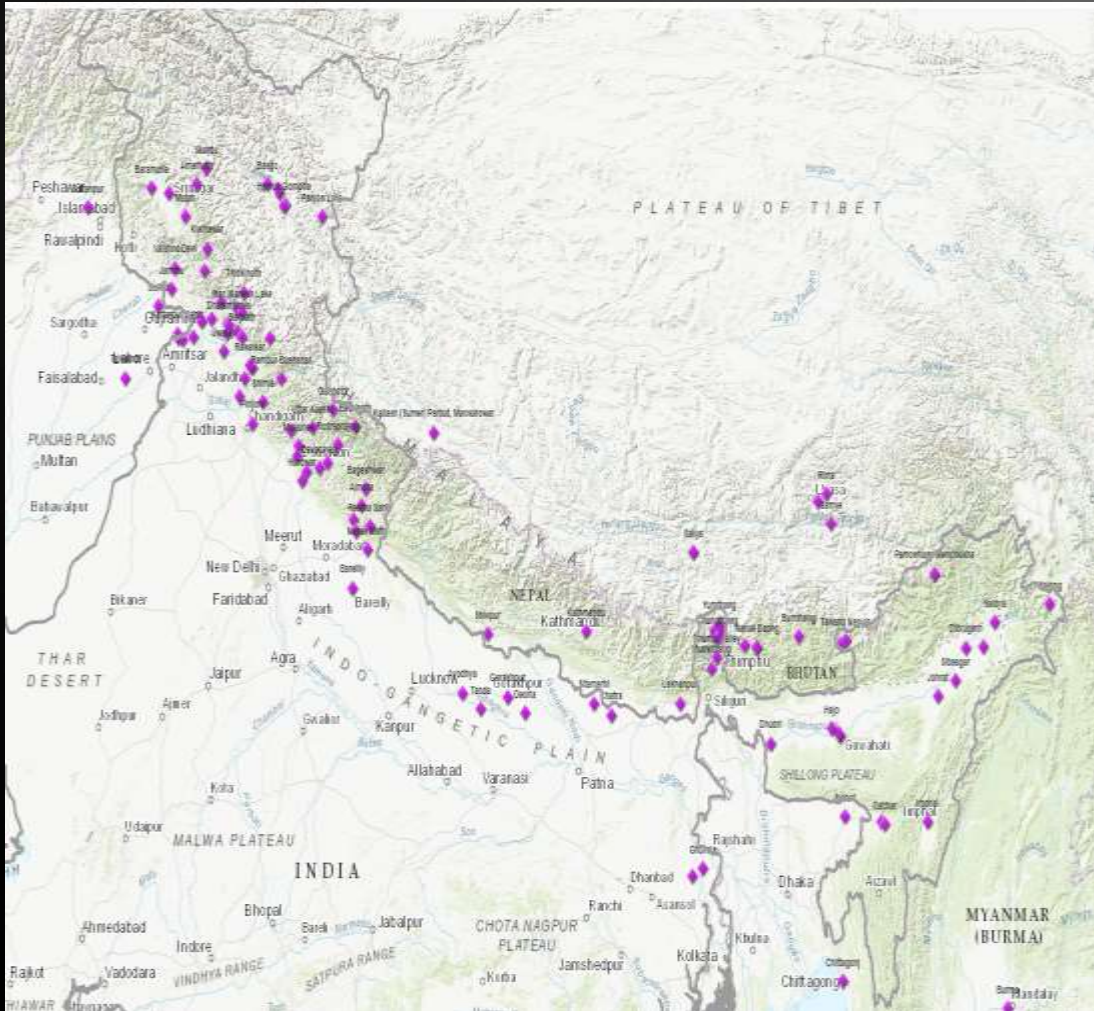
3 POINTS FOR QUESTION THAT HAS BONUS PART

IN CASE OF WRONG ANSWER, QUESTION WILL BE PASSED TO NEXT TEAM AND THEY WILL GET 1 POINT TO ANSWER. IF THEY ALSO ANSWER BONUS QUESTION, THEN THEY WILL GET 2 POINTS

ROUND 1 - TEAM 1 – QUESTION 1

WHICH CITIES / COUNTRIES DID GURU NANAK DEV JEE COVER AS PART OF THIRD UDAASI
BONUS QUESTION – WHAT YEARS WAS THIRD UDASI SPREAD ACROSS?

ROUND 1 - TEAM 1 – ANSWER 1



- UNA, MANDI, RAWALSAR, KULLU, MANIKARAN
- MOUNT KAAG BHASUND, GARHWAL, HARIDWAR
- NANAK MATA, TANDA, NEPAL(KATHMANDU), CHUNGTHANG (SIKKIM)
- LHASHA(TIBET), MOUNT SUMERU
- LEH, ANANTNAG, MATTON, BRAMAULLA,
- BERWA(BUDGAM), SRINAGAR, LAKE MANSAROVER (MOUNT KAILASH), LAKE DONGMAR

ROUND 1 - TEAM 1 – BONUS ANSWER 1

- 1514-18

ROUND 1 - TEAM 2 – QUESTION 1

WHICH CITIES / COUNTRIES DID GURU NANAK DEV JEE COVER AS PART OF SECOND UDAASI

BONUS QUESTION – WHAT YEARS WAS SECOND UDASI SPREAD ACROSS?

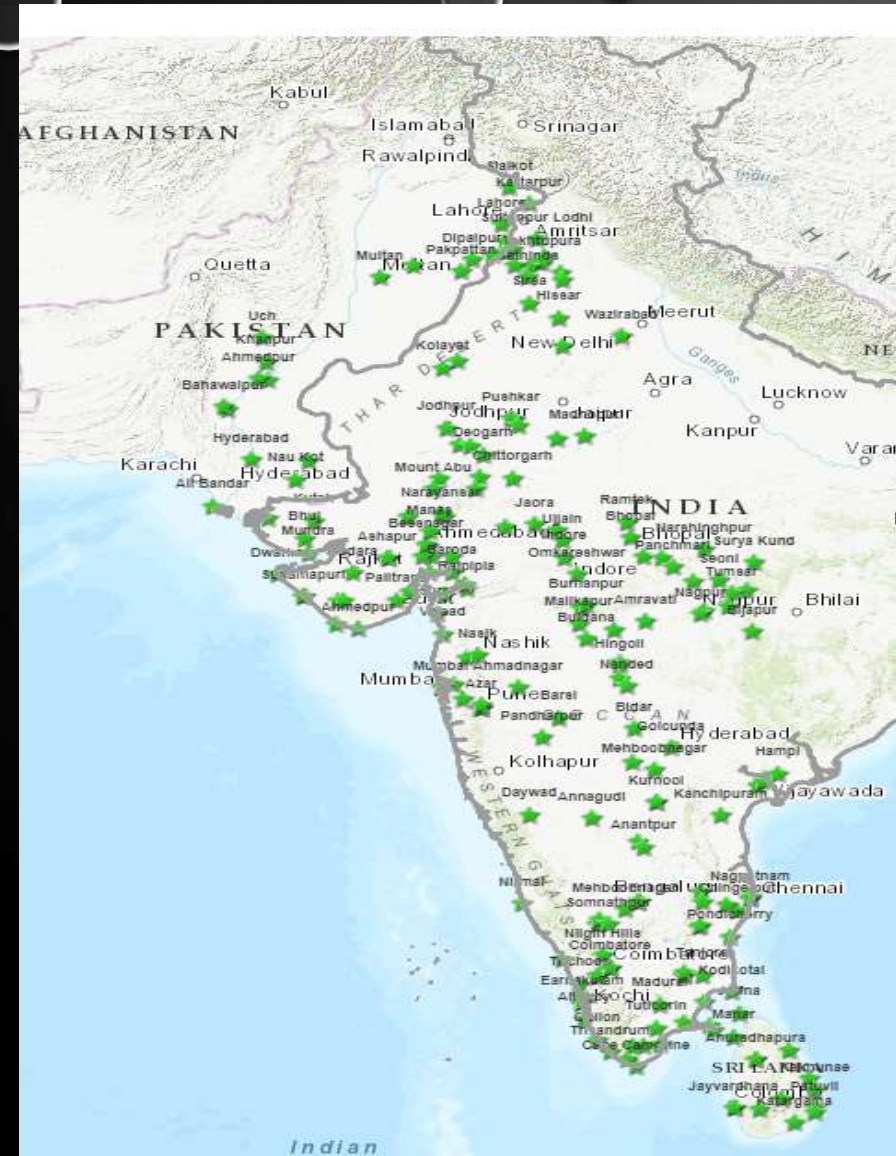
ROUND 1 - TEAM 2 - ANSWER 1

INDIA

- ANDHRA PRADESH: VIJAYWADA, GUNTUR
- TAMIL NADU: NAGAPATNAM, KANCHIPURAM, TIRUVANNAMALAI, TIRUCHIRAPALLY, TRIVANMALAY, RAMESHWARAM
- KARNATAKA/KERALA: COCHIN, PALGHAT, NILGIRI HILLS, RANGAPATAN, BIDAR
- MAHARASHTRA: NANDED, NARSI BAMINI, BARSII(SHOLAPUR), NASIK, POONA, AMARNATH, NASIK, AURANGABAD
- MADHYA PRADESH: OMKARESHWAR, BETMA(INDORE), BURHANPUR(KHANDWA), GVARIGHAT, INDAUR, UJJAIN
- GUJRAT: PALITANA, DWARKA, BET DWARKA, KUTCHH, BAROACH, JUNAGARH, VADODARA
- RAJASTHAN: JABALPUR AND CHITRAKOOT AND RIKHANPUR, PUSHKAR, AJMER

SRI LANKA

- MATIAKALAM, KATARGAMA, BATTICOLOA, SITA ELIYA



ROUND 1 - TEAM 2 – BONUS ANSWER 1

- 1506-13

ROUND 1 - TEAM 3 – QUESTION 1

WHICH CITIES / COUNTRIES DID GURU NANAK DEV JEE COVER AS PART OF FOURTH UDAASI

BONUS QUESTION – WHAT YEARS WAS FOURTH UDASI SPREAD ACROSS?

ROUND 1 - TEAM 3 – ANSWER 1



A map of the Middle East and surrounding regions, including Iran, Iraq, Afghanistan, Pakistan, Saudi Arabia, and parts of Turkey, Azerbaijan, and India. Orange dots are placed on numerous cities across these regions, indicating locations of interest. The dots are concentrated in Iran, Iraq, Afghanistan, and Pakistan, with a few in Saudi Arabia and India. The map shows major cities like Tehran, Baghdad, Kabul, Kandahar, and Karachi, as well as smaller cities and towns. The Persian Gulf and the Red Sea are also visible.

- MULTAN, LAKHPAT, KARACHI
- ADDAN, JEDDAH, AL MECCA, MEDINA
- BAGHDAD, BASRAH, KARBALA
- BUSHEHAR, KHORRAMSHAHR
- TEHRAN, ASHGABAT, URGENCH, BUKHARA, SAMARKAND
- KANDHAR, KABUL, HASSAN ABDAL, JALALABAD
- INSCRIPTIONS IN TURKEY, AZERBAIZAN, AFRICA & ROME(POSSIBILITY)



- MULTAN, LAKHPAT, KARACHI
- ADDAN, JEDDAH, AL MECCA, MEDINA
- BAGHDAD, BASRAH, KARBALA
- BUSHEHAR, KHORRAMSHAHR
- TEHRAN, ASHGHBAT, URGENCH, BUKHARA, SAMARKAND
- KANDHAR, KABUL, HASSAN ABDAL, JALALABAD
- INSCRIPTIONS IN TURKEY, AZERBAIZAN, AFRICA & ROME (POSSIBILITY)

ROUND 1 - TEAM 3 – BONUS ANSWER 1

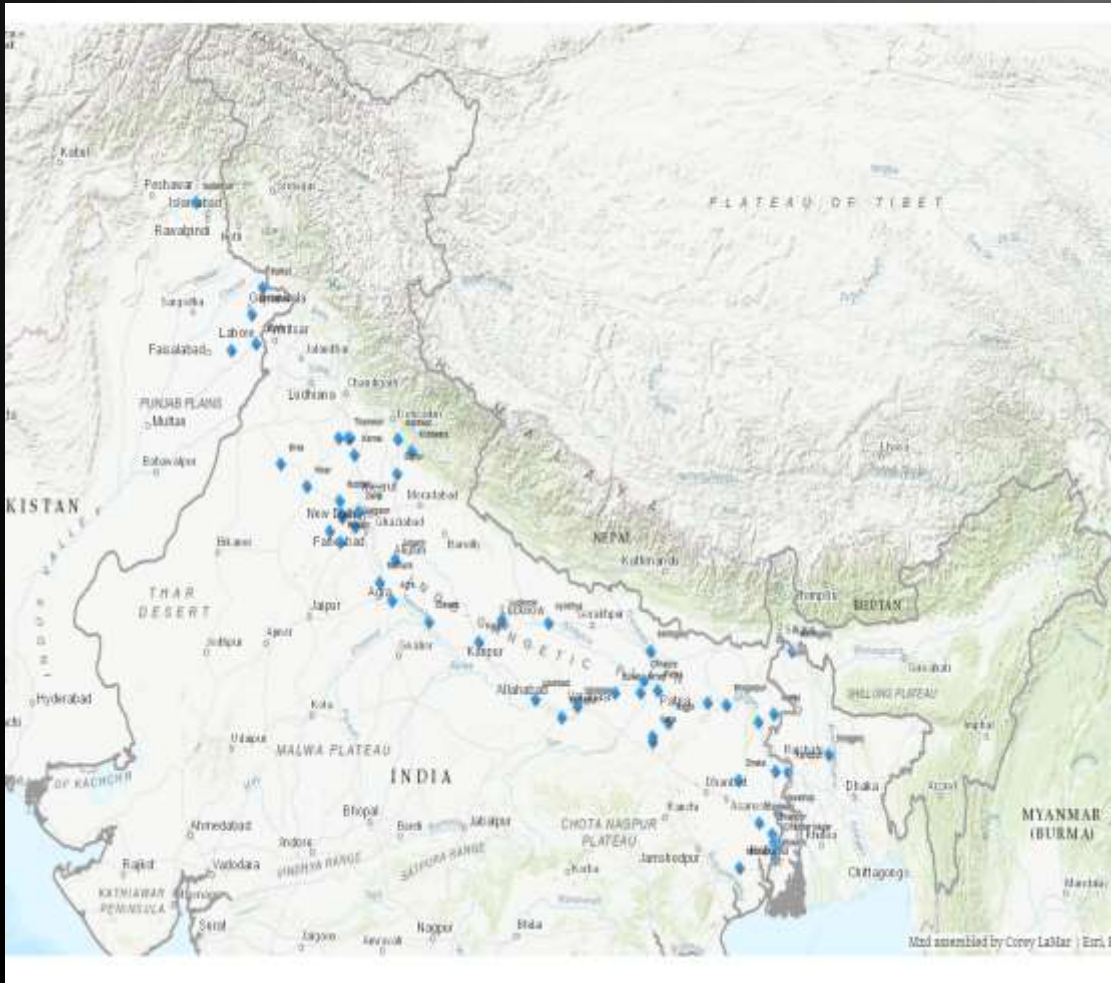
- 1519-21

ROUND 1 - TEAM 4 – QUESTION 1

WHICH CITIES / COUNTRIES DID GURU NANAK DEV JEE COVER AS PART OF FIRST UDAASI

BONUS QUESTION – WHAT YEARS WAS FIRST UDASI SPREAD ACROSS?

ROUND 1 - TEAM 4 – ANSWER 1



- EMINABAD (PAKISTAN)
- MAKADAMPUR (PAKISTAN)
- HARDWAR
- GORAKHMATA (PILIBHIT)
- REETHA SAHIB (ALMORA)
- BANARAS
- GAYA
- KAMRUP
- JAGAN NATH PURI

ROUND 1 - TEAM 4 – BONUS ANSWER 1

- 1500-1506

The background is a dark, textured surface with numerous water droplets of various sizes. Some droplets are large and prominent, while others are small and scattered. The droplets have a realistic appearance with highlights and shadows, giving them a three-dimensional look. They are distributed across the entire frame, with a higher concentration in the upper and lower portions.

ROUND 1 - TEAM 1 – QUESTION 2

ACCOMPLISHED MUSICIAN AND CARPENTER BY
TRADE. MADE RABAB FOR GURU NANAK DEV JEE,
BEFORE HE WENT FOR UDASIS

ROUND 1 - TEAM 1 – ANSWER 2

BHAI FIRANDA JEE

The background of the slide is a dark, textured grey. It is decorated with numerous realistic water droplets and bubbles of various sizes. Some are large and prominent, while others are small and scattered. The droplets have highlights and shadows, giving them a three-dimensional appearance. They are primarily located in the top-left and bottom-right corners, with a few smaller ones scattered throughout the center.

ROUND 1 - TEAM 2 – QUESTION 2

ATHEIST KING OF CEYLON WHOSE EGO WAS CRUSHED BY
GURU NANAK DEV JEE'S DISCOURSE AND HIS STATE OF
MIND WAS CHANGED THEREAFTER

ROUND 1 - TEAM 2 – ANSWER 2

RAJA SHIVNABH.

THROUGH A DETAILED DISCOURSE GURU JEE MADE HIM REALISE THAT NONE OF THESE WORLDLY POSSESSIONS WAS REALLY HIS. ONLY THING, IF ANYTHING HE COULD DONATE WAS HIS EGO.

ROUND 1 - TEAM 3 – QUESTION 2

JEWELER FROM PATNA, JAIN BY RELIGION WAS HIGHLY IMPRESSED BY GURU NANAK DEV JEE'S DISCOURSES AND REQUESTED GURU SAHIB TO STAY AT HIS PLACE. GURU NANAK DEV JEE STAYED FOR ABOUT 4 MONTHS AT HIS PLACE.

ROUND 1 - TEAM 3 – ANSWER 2

SALAS RAI

HE EVEN DONATED HALF OF HIS PROPERTY TO GURU JEE FOR PRACHAR PURPOSES AND HIS SERVANT 'ADHARAKA' WAS APPOINTED HEAD OF LOCAL SANGAT. IT WAS THE SAME PLACE WHICH GURU TEG BAHADUR JEE VISITED DURING HIS JOURNEY TO ASSAM AND GURU GOBIND SINGH JEE WAS BORN HERE.

NOW THIS VERY PLACE IS KNOWN AS TAKHT SRI PATNA SAHIB.

ROUND 1 - TEAM 4 – QUESTION 2

RICH MAN FROM LAHORE WHO DISPLAYED HIS EGO
THROUGH NUMBER OF FLAGS OUTSIDE HIS HOUSE AND
EACH FLAG REPRESENTED ONE CRORE RUPEES.

ROUND 1 - TEAM 4 – ANSWER 2

DUNI CHAND

GURU NANAK DEV JEE PREACHED HIM THAT DESPITE ALL THIS WEALTH HE CAN'T EVEN TAKE A NEEDLE WITH HIM TO DARGAH. IT'S ONLY NAAM THAT WILL ACCOMPANY HIM.

ROUND 1 - TEAM 1 – QUESTION 3

FAMOUS BRAHMIN FROM VARANASI WHO QUESTIONED GURU NANAK DEV JEE'S AUTHENTICITY AS HE WAS NOT CARRYING SALGRAM (DEVOTEE STONE), DIDN'T WEAR A NECKLACE, HAD NO ROSARY AND NEITHER HAD A MARK OF CHANDAN ON HIS FOREHEAD

ROUND 1 - TEAM 1 – ANSWER 3

PANDIT CHATUR DAS.

GURU JEE GAVE HIM UPDESH IN FORM OF THIS SHABAD

ਸਾਲ ਗ੍ਰਾਮ ਬਿਪ ਪੂਜਿ ਮਨਾਵਹੁ ਸੁਕ੍ਰਿਤੁ ਤੁਲਸੀ ਮਾਲਾ ॥

O BRAHMIN, YOU WORSHIP AND BELIEVE IN YOUR STONE-GOD, AND WEAR YOUR CEREMONIAL ROSARY BEADS.

ਰਾਮ ਨਾਮੁ ਜਪਿ ਬੇੜਾ ਬਾਂਧਹੁ ਦਇਆ ਕਰਹੁ ਦਇਆਲਾ ॥੧॥

CHANT THE NAME OF THE LORD. BUILD YOUR BOAT, AND PRAY, ""O MERCIFUL LORD, PLEASE BE MERCIFUL TO ME."" ||1||

ROUND 1 - TEAM 2 – QUESTION 3

HINDU PANDIT FROM SRI NAGAR WHO WAS VERY PROUD OF NUMBER OF BOOKS HE HAD READ AND WHICH HE CARRIED WITH HIM ON CAMELS. WAS KNOWN FOR LENGTHY DEBATES AND QUESTIONED GURU NANAK DEV JEE ABOUT CREATION OF THE WORLD

ROUND 1 - TEAM 2 – ANSWER 3

PANDIT BRAHAM DAS.

IT IS BELIEVED GURU JEE PREACHED HIM THROUGH THIS SHABAD

ਅਰਬਦ ਨਰਬਦ ਧੁੰਧੂਕਾਰਾ ॥

FOR ENDLESS EONS, THERE WAS ONLY UTTER DARKNESS.

ਧਰਣਿ ਨ ਗਗਨਾ ਹੁਕਮੁ ਅਪਾਰਾ ॥

THERE WAS NO EARTH OR SKY; THERE WAS ONLY THE INFINITE
COMMAND OF HIS HUKAM.

ROUND 1 - TEAM 3 – QUESTION 3

HEAD OF NATHPANTHI YOGIS MET GURU NANAK DEV JEE AT ACHAL BATALA. HE WAS JEALOUS OF GURU JEE'S FOLLOWING AMONG LOCAL SANGAT AND HAD LONG RELIGIOUS DEBATE ON PATHWAY TO PARMESHAAR (ਮਕਾਨ ਪੁਰਖ).

ROUND 1 - TEAM 3 – ANSWER 3

YOGI BHANGRA NATH.

ROUND 1 - TEAM 4 – QUESTION 3

PIR OF BAGHDAD WHO QUESTIONED GURU NANAK DEV
JEE'S CONCEPT OF UNIVERSE HAVING MORE THAN 7
HEAVENS (AKASH) AND UNDERWORLDS (PATAAL)

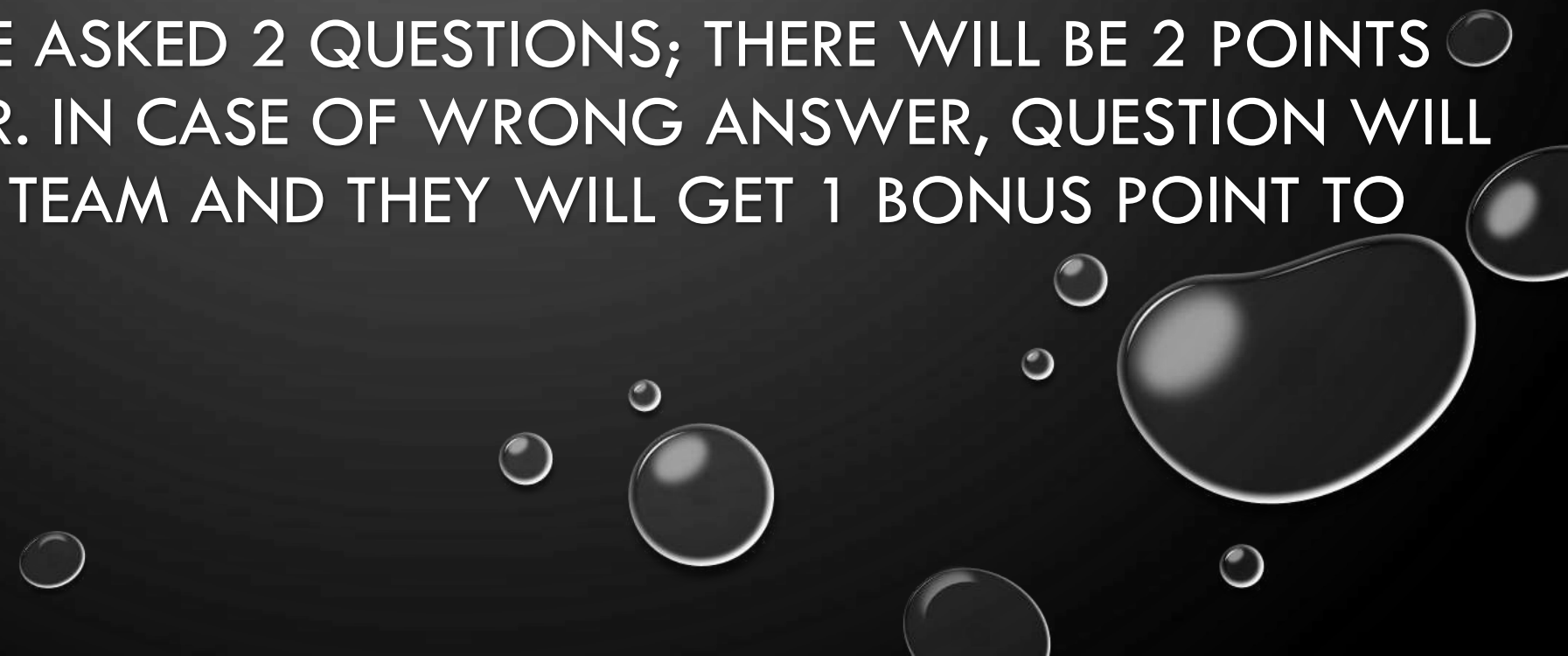
ROUND 1 - TEAM 4 – ANSWER 3

PIR DASTGIR



ROUND 2 – HISTORICAL PLACES

EVERY TEAM WILL BE ASKED 2 QUESTIONS; THERE WILL BE 2 POINTS FOR RIGHT ANSWER. IN CASE OF WRONG ANSWER, QUESTION WILL BE PASSED TO NEXT TEAM AND THEY WILL GET 1 BONUS POINT TO ANSWER



ROUND 2 - TEAM 1 – QUESTION 1

- GURDWARA SAHIB IN MEMORY OF GURU NANAK DEV JEE – LOCATED ON THE RIGHT BANK OF YAMUNA RIVER NEAR MASANI RAILWAY STATION BETWEEN MATHURA AND VRINDAVAN.
- GURU NANAK DEV JEE VISITED MATHURA AND VRINDAVAN DURING THE MONTH-LONG SHRAVAN FAIR HELD IN THE BIKRAMI MONTH OF SAVAN (JULY-AUGUST).
- AS THE WATER OF THE RIVER DURING THIS PERIOD IS MUDDY, THE GURU JEE IS SAID TO HAVE SET UP AND HIMSELF MANNED A PIAU (DRINKING WATER STALL) AND SERVED CLEAN WATER TO PILGRIMS



ROUND 2 - TEAM 1 – ANSWER 1

GURUDWARA GURU NANAK BAGICHI (GURU
NANAK'S SMALL GARDEN)



ROUND 2 - TEAM 2 – QUESTION 1

GURUDWARA SAHIB IN HARIDWAR DEDICATED TO
EVENT WHERE GURU NANK DEV JEE STARTED
THROWING WATER TOWARDS PUNJAB TO PREACH THE
MASSES THAT IF HIS WATER CAN'T REACH PUNJAB, THEN
HOW CAN THERE WATER REACH SUN?

ROUND 2 - TEAM 2 – ANSWER 1

HAR KI PAUDI

ROUND 2 - TEAM 3 – QUESTION 1

SRI GURU NANAK DEV JI CAME TO THIS PLACE NEAR SRI NAGAR ON HIS THIRD UDASI. GURU SAHIB STAYED HERE FOR THIRTEEN DAYS. GURU SAHIB HAD DISCUSSION WITH PANDIT BRAHM DAS, WHO WAS GREAT SANSKRIT SCHOLAR. HE USED TO CARRY HUGE STOCK OF BOOKS READ BY HIM.

ROUND 2 - TEAM 3 – ANSWER 1

GURDWARA SRI MATTAN SAHIB

THE GROUP OF KASHMIRI PANDITS OF MATTAN VILLAGE VISITED **SRI GURU TEG BAHADUR SAHIB** AND REQUESTED HIM TO SAVE THEM AND THERE RELIGION. AND FOR WHOM GURU SAHIB MADE THE SUPREME SACRIFICE OF LAYING DOWN HIS LIFE.

ROUND 2 - TEAM 4 – QUESTION 1

- GURDWARA SAHIB LOCATED IN UDHAM SINGH NAGAR, UTTRAKHAND, WHERE GURU NANAK DEV JEE HAD DISCUSSIONS WITH YOGIS.
- LATER ON GURU HARGOBIND SAHIB JEE VISITED THE SAME PLACE ON REQUEST OF BABA ALMAST JEE, WHO WAS CARE TAKER OF THIS PLACE AND WAS BEING HARASSED BY YOGIS.



ROUND 2 - TEAM 4 – ANSWER 1

GURDWARA NANAK MATTA - UTTRAKHAND



ROUND 2 - TEAM 1 – QUESTION 2

A VILLAGE IN SRI LANKA, VISITED BY GURU NANAK SAHIB AND BHAI MARDANA AROUND 1574. THE VILLAGE WHICH GREW UP AFTER THE GURU HAD CAMPED HERE OWES ITS NAME TO GURU NANAK DEV JEE.

NAME THE VILLAGE?

ROUND 2 - TEAM 1 – ANSWER 2

KURUKAL MANDAP (GURU'S VILLAGE IN
SANSKRIT)

ROUND 2 - TEAM 2 – QUESTION 2

GURDWARA SAHIB IN EMINABAD, WHERE GURU NANAK
DEV JEE IS BELIEVED TO HAVE BEEN IMPRISONED BY
BABAR



ROUND 2 - TEAM 2 – ANSWER 2

GURDWARA CHAKKI SAHIB



ROUND 2 - TEAM 3 – QUESTION 2

**NAME THE GURUDWARA IN IRAQ THAT WAS FOUNDED BY
MOHAMAD PASHA AMOOT, FOLLOWER OF PIR BAKOL AT THE TIME
OF GURU NANAK DEV JEE VISIT IN THE YEAR 927 AH(1520-1 A.D).**



ROUND 2 - TEAM 3 – ANSWER 2

GURDWARA BABA NANAK, BAGHDAD, IRAQ



ROUND 2 - TEAM 4 – QUESTION 2

NAME THE GURDWARA SAHIB LOCATED IN CAMPUS OF UNIVERSITY OF DHAKA THAT COMMEMORATES VISIT OF GURU NANAK DEV JEE IN 1506-1507. IT IS CONSIDERED TO BE THE BIGGEST GURDWARA SAHIB IN BANGLADESH



ROUND 2 - TEAM 4 – ANSWER 2

GURDWARA NANAK SHAHI.



ROUND 3 – GURBANI OF GURU NANAK DEV JEE

RULES

2 POINTS FOR CORRECT ANSWER

1 POINT FOR BONUS QUESTION

IF ORIGINAL TEAM CAN NOT ANSWER THEN TEAM WHO ANSWERS WILL GET
1 POINT FOR BASE QUESTION AND 1 POINT FOR BONUS QUESTION.

The background is a dark, textured grey. It is decorated with numerous water droplets and bubbles of various sizes. Some are large and prominent, while others are small and scattered. The droplets have highlights and shadows, giving them a three-dimensional appearance. They are primarily located in the top-left and bottom-right corners, with a few smaller ones scattered throughout the center.

ROUND 3 - TEAM 1 – QUESTION 1

APART FROM JAPU JEE SAHIB, WHICH OTHER BAANI OF GURU NANAK DEV JEE IS
NOT TITLED UNDER ANY RAAG?



ROUND 3 - TEAM 1 – ANSWER 1

SALOK VAARAN TO VADHEEK

BONUS POINT – HOW MANY SALOKS



ROUND 3 - TEAM 1 – ANSWER 1

32 SALOKS

ROUND 3 - TEAM 2 – QUESTION 1

NAME THE BAANI THAT IS WRITTEN BY BOTH GURU
NANAK DEV JEE AND GURU AMAR DAAS JEE

BONUS POINT – IN WHICH RAAG



ROUND 3 - TEAM 2 – ANSWER 1

PATTI BY GURU NANAK DEV JEE AND GURU AMAR DAAS JEE



ROUND 3 - TEAM 2 – ANSWER 1

RAAG AASA

ROUND 3 - TEAM 3 – QUESTION 1

TWO BAANIS OF GURU NANAK DEV JEE, WHOSE TITLES ARE TOTALLY OPPOSITE TO EACH OTHER AND ARE DOCUMENTED NEXT TO EACH OTHER IN GURU GRANTH SAHIB JEE.

BONUS POINT – NAME THE RAAG



ROUND 3 - TEAM 3 – ANSWER 1

KUCHAJEE AND SUCHAJEE



ROUND 3 - TEAM 1 – ANSWER 3

RAAG SUHI

ROUND 3 - TEAM 4 – QUESTION 1

APART FROM BARAAH MAAH, NAME THE BAANI THAT IS WRITTEN BY
BOTH GURU NANAK DEV JEE AND GURU ARJAN DEV JEE

BONUS POINT – IN WHICH RAG IS GURU NANAK DEV JEE'S BAANI

ROUND 3 - TEAM 4 – ANSWER 1

THITTI BY GURU NANAK DEV JEE AND GURU
ARJAN DEV JEE.

WHICH RAAG IS THITTI OF GURU NANAK DEV
JEE?

ROUND 3 - TEAM 4 – ANSWER 1

THITTI – GURU NANAK DEV JEE - RAAG BILAV

THITTI – GURU ARJAN DEV JEE – RAAG GAURI

THITTI – BHAGAT KABIR JEE – RAAG GAURI

ROUND 3 - TEAM 1 – QUESTION 2

ਸਾਹਿਬੁ ਮੇਰਾ ਏਕੋ ਹੈ ॥
ਏਕੋ ਹੈ ਭਾਈ ਏਕੋ ਹੈ ॥੧॥ ਰਹਾਉ ॥

TELL ANY ONE STANZA OF THIS SHABAD.

BONUS POINT – RECITE FULL SHABAD.

ROUND 3 - TEAM 1 – ANSWER 2

ਆਸਾ ਮਹਲਾ ੧ ॥

ਜੇਤਾ ਸਬਦੁ ਸੁਰਤਿ ਧੁਨਿ ਤੇਤੀ ਜੇਤਾ ਰੂਪੁ ਕਾਇਆ ਤੇਰੀ ॥

ਤੂੰ ਆਪੇ ਰਸਨਾ ਆਪੇ ਬਸਨਾ ਅਵਰੁ ਨ ਦੂਜਾ ਕਹਉ ਮਾਈ ॥੧॥

ਸਾਹਿਬੁ ਮੇਰਾ ਏਕੇ ਹੈ ॥

ਏਕੇ ਹੈ ਭਾਈ ਏਕੇ ਹੈ ॥੧॥ ਰਹਾਉ ॥

ਆਪੇ ਮਾਰੇ ਆਪੇ ਛੋਡੈ ਆਪੇ ਲੇਵੈ ਦੇਇ ॥

ਆਪੇ ਵੇਖੈ ਆਪੇ ਵਿਗਸੈ ਆਪੇ ਨਦਰਿ ਕਰੇਇ ॥੨॥

ਜੇ ਕਿਛੁ ਕਰਣਾ ਸੇ ਕਰਿ ਰਹਿਆ ਅਵਰੁ ਨ ਕਰਣਾ ਜਾਈ ॥

ਜੈਸਾ ਵਰਤੈ ਤੈਸੇ ਕਹੀਐ ਸਭ ਤੇਰੀ ਵਡਿਆਈ ॥੩॥

ਕਲਿ ਕਲਵਾਲੀ ਮਾਇਆ ਮਦੁ ਮੀਠਾ ਮਨੁ ਮਤਵਾਲਾ ਪੀਵਤੁ ਰਹੈ ॥

ਆਪੇ ਰੂਪ ਕਰੇ ਬਹੁ ਭਾਂਤੀ ਨਾਨਕੁ ਬਖਸ਼ੈ ਏਵ ਕਹੈ ॥੪॥੫॥

ROUND 3 - TEAM 2 – QUESTION 2

ਗਲੀ ਜੋਗੁ ਨ ਹੋਈ ॥

ਏਕ ਦ੍ਰਿਸ਼ਟਿ ਕਰਿ ਸਮਸਰਿ ਜਾਣੈ ਜੋਗੀ ਕਹੀਐ ਸੋਈ ॥੧॥ ਰਹਾਉ ॥

TELL ANY ONE STANZA OF THIS SHABAD.

BONUS POINT – RECITE FULL SHABAD.

ROUND 3 - TEAM 2 – ANSWER 2

ਸੂਹੀ ਮਹਲਾ ੧ ਘਰੁ ੨

ੴ ਸਤਿਗੁਰ ਪ੍ਰਸਾਦਿ ॥

ਜੇਗੁ ਨ ਖਿੰਥਾ ਜੇਗੁ ਨ ਡੰਡੈ ਜੇਗੁ ਨ ਭਸਮ ਚੜਾਈਐ ॥

ਜੇਗੁ ਨ ਮੁੰਦੀ ਮੂੰਡਿ ਮੁਡਾਇਐ ਜੇਗੁ ਨ ਸਿੰਝੀ ਵਾਈਐ ॥ਅੰਜਨ ਮਾਹਿ ਨਿਰੰਜਨਿ ਰਹੀਐ ਜੇਗ ਜੁਗਤਿ ਇਵ ਪਾਈਐ ॥੧॥

ਗਲੀ ਜੇਗੁ ਨ ਹੋਈ ॥ਏਕ ਦ੍ਰਿਸਟਿ ਕਰਿ ਸਮਸਰਿ ਜਾਣੈ ਜੇਗੀ ਕਹੀਐ ਸੋਈ ॥੧॥ ਰਹਾਉ ॥

ਜੇਗੁ ਨ ਬਾਹਰਿ ਮੜੀ ਮਸਾਣੀ ਜੇਗੁ ਨ ਤਾੜੀ ਲਾਈਐ ॥ਜੇਗੁ ਨ ਦੇਸਿ ਦਿਸੰਤਰਿ ਭਵਿਐ ਜੇਗੁ ਨ ਤੀਰਥਿ ਨਾਈਐ ॥ਅੰਜਨ ਮਾਹਿ ਨਿਰੰਜਨਿ ਰਹੀਐ ਜੇਗ ਜੁਗਤਿ ਇਵ ਪਾਈਐ ॥੨॥

ਸਤਿਗੁਰੁ ਭੇਟੈ ਤਾ ਸਹਸਾ ਤੂਟੈ ਧਾਵਤੁ ਵਰਜਿ ਰਹਾਈਐ ॥ਨਿਝਰੁ ਝਰੈ ਸਹਜ ਧੁਨਿ ਲਾਗੈ ਘਰ ਹੀ ਪਰਚਾ ਪਾਈਐ ॥ਅੰਜਨ ਮਾਹਿ ਨਿਰੰਜਨਿ ਰਹੀਐ ਜੇਗ ਜੁਗਤਿ ਇਵ ਪਾਈਐ ॥੩॥

ਨਾਨਕ ਜੀਵਤਿਆ ਮਰਿ ਰਹੀਐ ਐਸਾ ਜੇਗੁ ਕਮਾਈਐ ॥ਵਾਜੇ ਬਾਝਹੁ ਸਿੰਝੀ ਵਾਜੈ ਤਉ ਨਿਰਭਉ ਪਦੁ ਪਾਈਐ ॥ਅੰਜਨ ਮਾਹਿ ਨਿਰੰਜਨਿ ਰਹੀਐ ਜੇਗ ਜੁਗਤਿ ਤਉ ਪਾਈਐ ॥੪॥੧॥੮॥

ROUND 3 - TEAM 3 – QUESTION 2

ਹਰਿ ਬਿਨੁ ਜੀਉ ਜਲਿ ਬਲਿ ਜਾਉ ॥

ਮੈ ਆਪਣਾ ਗੁਰੁ ਪੂਛਿ ਦੇਖਿਆ ਅਵਰੁ ਨਾਹੀ ਥਾਉ ॥੧॥ ਰਹਾਉ ॥

TELL ANY ONE STANZA OF THIS SHABAD.

BONUS POINT – RECITE FULL SHABAD.

ROUND 3 - TEAM 3 - ANSWER 2

ਸਿਰੀਰਾਗੁ ਮਹਲਾ ੧ ॥

ਰਾਗੁ ਸਿਰੀਰਾਗੁ ਮਹਲਾ ਪਹਿਲਾ ੧ ਘਰੁ ੧ ॥

ਮੇਤੀ ਤ ਮੰਦਰ ਉਸਰਹਿ ਰਤਨੀ ਤ ਹੋਹਿ ਜੜਾਉ ॥ ਕਸਤੂਰਿ ਕੁੰਗੂ ਅਗਰਿ ਚੰਦਨਿ ਲੀਪਿ ਆਵੈ ਚਾਉ ॥
ਮਤੁ ਦੇਖਿ ਭੂਲਾ ਵੀਸਰੈ ਤੇਰਾ ਚਿਤਿ ਨ ਆਵੈ ਨਾਉ ॥੧॥

ਹਰਿ ਬਿਨੁ ਜੀਉ ਜਲਿ ਬਲਿ ਜਾਉ ॥ ਮੈ ਆਪਣਾ ਗੁਰੁ ਪੂਛਿ ਦੇਖਿਆ ਅਵਰੁ ਨਾਹੀ ਥਾਉ ॥੧॥ ਰਹਾਉ ॥

ਧਰਤੀ ਤ ਹੀਰੇ ਲਾਲ ਜੜਤੀ ਪਲਘਿ ਲਾਲ ਜੜਾਉ ॥ ਮੋਹਣੀ ਮੁਖਿ ਮਣੀ ਸੋਹੈ ਕਰੇ ਰੰਗਿ ਪਸਾਉ ॥

ਮਤੁ ਦੇਖਿ ਭੂਲਾ ਵੀਸਰੈ ਤੇਰਾ ਚਿਤਿ ਨ ਆਵੈ ਨਾਉ ॥੨॥

ਸਿਧੁ ਹੋਵਾ ਸਿਧਿ ਲਾਈ ਰਿਧਿ ਆਖਾ ਆਉ ॥ ਗੁਪਤੁ ਪਰਗਟੁ ਹੋਇ ਬੈਸਾ ਲੋਕੁ ਰਾਖੈ ਭਾਉ ॥

ਮਤੁ ਦੇਖਿ ਭੂਲਾ ਵੀਸਰੈ ਤੇਰਾ ਚਿਤਿ ਨ ਆਵੈ ਨਾਉ ॥੩॥

ਸੁਲਤਾਨੁ ਹੋਵਾ ਮੇਲਿ ਲਸਕਰ ਤਖਤਿ ਰਾਖਾ ਪਾਉ ॥ ਹੁਕਮੁ ਹਾਸਲੁ ਕੀਚੈ ਬੈਠਾ ਨਾਨਕਾ ਸਭ ਵਾਉ ॥

ਮਤੁ ਦੇਖਿ ਭੂਲਾ ਵੀਸਰੈ ਤੇਰਾ ਚਿਤਿ ਨ ਆਵੈ ਨਾਉ ॥੪॥੧॥

ROUND 3 - TEAM 4 – QUESTION 2

ਹੰਉ ਕੁਰਬਾਨੈ ਜਾਉ ਮਿਹਰਵਾਨਾ ਹੰਉ ਕੁਰਬਾਨੈ ਜਾਉ ॥

ਹੰਉ ਕੁਰਬਾਨੈ ਜਾਉ ਤਿਨਾ ਕੈ ਲੈਨਿ ਜੋ ਤੇਰਾ ਨਾਉ ॥

ਲੈਨਿ ਜੋ ਤੇਰਾ ਨਾਉ ਤਿਨਾ ਕੈ ਹੰਉ ਸਦ ਕੁਰਬਾਨੈ ਜਾਉ ॥੧॥ ਰਹਾਉ ॥

TELL ANY ONE PARAGRAPH OF THIS SHABAD.

BONUS POINT – RECITE FULL SHABAD.

ROUND 3 - TEAM 4 – ANSWER 2

ਤਿਲੰਗ ਮਹਲਾ ੧ ਘਰੁ ੩

ੴ ਸਤਿਗੁਰ ਪ੍ਰਸਾਦਿ ॥

ਇਹੁ ਤਨੁ ਮਾਇਆ ਪਾਹਿਆ ਪਿਆਰੇ ਲੀਤੜਾ ਲਬਿ ਰੰਗਾਏ ॥ ਮੇਰੈ ਕੰਤ ਨ ਭਾਵੈ ਚੋਲੜਾ ਪਿਆਰੇ ਕਿਉ ਧਨ ਸੇਜੈ ਜਾਏ ॥੧॥

ਹੰਉ ਕੁਰਬਾਨੈ ਜਾਉ ਮਿਹਰਵਾਨਾ ਹੰਉ ਕੁਰਬਾਨੈ ਜਾਉ ॥ ਹੰਉ ਕੁਰਬਾਨੈ ਜਾਉ ਤਿਨਾ ਕੈ ਲੈਨਿ ਜੇ ਤੇਰਾ ਨਾਉ ॥

ਲੈਨਿ ਜੇ ਤੇਰਾ ਨਾਉ ਤਿਨਾ ਕੈ ਹੰਉ ਸਦ ਕੁਰਬਾਨੈ ਜਾਉ ॥੧॥ ਰਹਾਉ ॥

ਕਾਇਆ ਰੰਝਣਿ ਜੇ ਥੀਐ ਪਿਆਰੇ ਪਾਈਐ ਨਾਉ ਮਜੀਠ ॥ ਰੰਝਣ ਵਾਲਾ ਜੇ ਰੰਝੈ ਸਾਹਿਬੁ ਐਸਾ ਰੰਗੁ ਨ ਡੀਠ ॥੨॥

ਜਿਨ ਕੇ ਚੋਲੇ ਰਤੜੇ ਪਿਆਰੇ ਕੰਤੁ ਤਿਨਾ ਕੈ ਪਾਸਿ ॥ ਧੂੜਿ ਤਿਨਾ ਕੀ ਜੇ ਮਿਲੈ ਜੀ ਕਹੁ ਨਾਨਕ ਕੀ ਅਰਦਾਸਿ ॥੩॥

ਆਪੇ ਸਾਜੇ ਆਪੇ ਰੰਗੇ ਆਪੇ ਨਦਰਿ ਕਰੇਇ ॥ ਨਾਨਕ ਕਾਮਣਿ ਕੰਤੈ ਭਾਵੈ ਆਪੇ ਹੀ ਰਾਵੇਇ ॥੪॥੧॥੩॥

ROUND 3 - TEAM 1 – QUESTION 3

ਸਸੈ ਸਭੁ ਜਗੁ ਸਹਜਿ ਉਪਾਇਆ ਤੀਨਿ ਭਵਨ ਇਕ ਜੋਤੀ ॥
ਗੁਰਮੁਖਿ ਵਸਤੁ ਪਰਾਪਤਿ ਹੋਵੈ ਚੁਣਿ ਲੈ ਮਾਣਕ ਮੋਤੀ ॥

ABOVE PANKTI IS FROM WHICH GURBANI OF GURU NANAK DEV JEE

BONUS POINT – WHAT IS THE RAAG OF THIS BAANI

ROUND 3 - TEAM 1 – ANSWER 3

DAKHANI ONKAAR

ROUND 3 - TEAM 1 – ANSWER 3

RAAG RAMKALI

ROUND 3 - TEAM 2 – QUESTION 3

ਗੀਤ ਨਾਦ ਕਵਿਤ ਕਵੇ ਸੁਣਿ ਰਾਮ ਨਾਮਿ ਦੁਖੁ ਭਾਰੈ ॥
ਨਾਨਕ ਸਾ ਧਨ ਨਾਹ ਪਿਆਰੀ ਅਭ ਭਗਤੀ ਪਿਰ ਆਰੈ ॥੧੩॥

ABOVE PANKTI IS FROM WHICH GURBANI OF GURU NANAK DEV JEE

BONUS POINT – WHAT IS THE RAAG OF THIS BAANI

ROUND 3 - TEAM 2 – ANSWER 3

BARAH MAHA

ROUND 3 - TEAM 2 – ANSWER 3

RAAG TUKHARI

ROUND 3 - TEAM 3 – QUESTION 3

ਸਬਦੁ ਭਾਖਤ ਸਸਿ ਜੋਤਿ ਅਪਾਰਾ ॥
ਸਸਿ ਘਰਿ ਸੂਰੁ ਵਸੈ ਮਿਟੈ ਅੰਧਿਆਰਾ ॥

ABOVE PANKTI IS FROM WHICH GURBANI OF GURU NANAK DEV JEE

BONUS POINT – WHAT IS THE RAAG OF THIS BAANI

ROUND 3 - TEAM 3 – ANSWER 3

SIDH GOSHT

ROUND 3 - TEAM 3 – ANSWER 3

RAGA RAMKALI

ROUND 3 - TEAM 4 – QUESTION 3

ਮਨ ਕਾਹੇ ਭੂਲੇ ਮੂੜ ਮਨਾ ॥

ਜਬ ਲੇਖਾ ਦੇਵਹਿ ਬੀਰਾ ਤਉ ਪੜਿਆ ॥੧॥ ਰਹਾਉ ॥

ABOVE PANKTI IS FROM WHICH GURBANI OF GURU NANAK DEV JEE

BONUS POINT – WHAT IS THE RAAG OF THIS BAANI

ROUND 3 - TEAM 4 – ANSWER 3

PATTI

ROUND 3 - TEAM 4 – ANSWER 3

RAAG AASA

The image features a dark, textured background with numerous water droplets of varying sizes. Some droplets are large and prominent, while others are small and scattered. The droplets have a glossy, reflective surface, catching the light and creating bright highlights. They are distributed across the frame, with a higher concentration in the upper left and lower right areas.

THANKS FOR PARTICIPATION

ROUND 3 - TEAM 1 – QUESTION 3

ਗੁਰਮੁਖਿ ਸਾਚੇ ਕਾ ਭਉ ਪਾਵੈ ॥
ਗੁਰਮੁਖਿ ਬਾਣੀ ਅਘੜੁ ਘੜਾਵੈ ॥

COMPLETE THIS STANZA FROM SIDDH GOSHT

BONUS POINT – TELL THE NEXT PARAGRAPH

ROUND 3 - TEAM 1 – ANSWER 3

ਗੁਰਮੁਖਿ ਸਾਚੇ ਕਾ ਭਉ ਪਾਵੈ ॥

ਗੁਰਮੁਖਿ ਬਾਣੀ ਅਘੜੁ ਘੜਾਵੈ ॥

ਗੁਰਮੁਖਿ ਨਿਰਮਲ ਹਰਿ ਗੁਣ ਗਾਵੈ ॥

ਗੁਰਮੁਖਿ ਪਵਿਤ੍ਰੁ ਪਰਮ ਪਦੁ ਪਾਵੈ ॥

ਗੁਰਮੁਖਿ ਰੋਮਿ ਰੋਮਿ ਹਰਿ ਧਿਆਵੈ ॥

ਨਾਨਕ ਗੁਰਮੁਖਿ ਸਾਚਿ ਸਮਾਵੈ ॥੨੧॥

ROUND 3 - TEAM 1 – ANSWER 3

ਗੁਰਮੁਖਿ ਪਰਚੈ ਬੇਦ ਬੀਚਾਰੀ ॥

ਗੁਰਮੁਖਿ ਪਰਚੈ ਤਰੀਐ ਤਾਰੀ ॥

ਗੁਰਮੁਖਿ ਪਰਚੈ ਸੁ ਸਬਦਿ ਗਿਆਨੀ ॥

ਗੁਰਮੁਖਿ ਪਰਚੈ ਅੰਤਰ ਬਿਧਿ ਜਾਨੀ ॥

ਗੁਰਮੁਖਿ ਪਾਈਐ ਅਲਖ ਅਪਾਰੁ ॥

ਨਾਨਕ ਗੁਰਮੁਖਿ ਮੁਕਤਿ ਦੁਆਰੁ ॥੨੮॥

ROUND 3 - TEAM 2 – QUESTION 3

ਗੁਰਮੁਖਿ ਰਤਨੁ ਲਹੈ ਲਿਵ ਲਾਇ ॥

ਗੁਰਮੁਖਿ ਪਰਖੈ ਰਤਨੁ ਸੁਭਾਇ ॥

COMPLETE THIS PARAGRAPH FROM SIDDH GOSHT

BONUS POINT – TELL THE NEXT PARAGRAPH

ROUND 3 - TEAM 2 – ANSWER 3

ਗੁਰਮੁਖਿ ਰਤਨੁ ਲਹੈ ਲਿਵ ਲਾਇ ॥

ਗੁਰਮੁਖਿ ਪਰਖੈ ਰਤਨੁ ਸੁਭਾਇ ॥

ਗੁਰਮੁਖਿ ਸਾਚੀ ਕਾਰ ਕਮਾਇ ॥

ਗੁਰਮੁਖਿ ਸਾਚੇ ਮਨੁ ਪਤੀਆਇ ॥

ਗੁਰਮੁਖਿ ਅਲਖੁ ਲਖਾਏ ਤਿਸੁ ਭਾਵੈ ॥

ਨਾਨਕ ਗੁਰਮੁਖਿ ਚੇਟ ਨ ਖਾਵੈ ॥੩੫॥

ROUND 3 - TEAM 2 – ANSWER 3

ਗੁਰਮੁਖਿ ਨਾਮੁ ਦਾਨੁ ਇਸਨਾਨੁ ॥

ਗੁਰਮੁਖਿ ਲਾਗੈ ਸਹਜਿ ਧਿਆਨੁ ॥

ਗੁਰਮੁਖਿ ਪਾਵੈ ਦਰਗਹ ਮਾਨੁ ॥

ਗੁਰਮੁਖਿ ਭਉ ਭੰਜਨੁ ਪਰਧਾਨੁ ॥

ਗੁਰਮੁਖਿ ਕਰਣੀ ਕਾਰ ਕਰਾਏ ॥

ਨਾਨਕ ਗੁਰਮੁਖਿ ਮੇਲਿ ਮਿਲਾਏ ॥੩੬॥

ROUND 3 - TEAM 3 – QUESTION 3

ਸਬਦੁ ਭਾਖਤ ਸਸਿ ਜੋਤਿ ਅਪਾਰਾ ॥
ਸਸਿ ਘਰਿ ਸੂਰੁ ਵਸੈ ਮਿਟੈ ਅੰਧਿਆਰਾ ॥

COMPLETE THIS PARAGRAPH FROM SIDDH GOSHT

BONUS POINT – TELL THE NEXT PARAGRAPH

ROUND 3 - TEAM 3 – ANSWER 3

ਸਬਦੁ ਭਾਖਤ ਸਸਿ ਜੋਤਿ ਅਪਾਰਾ ॥

ਸਸਿ ਘਰਿ ਸੂਰੁ ਵਸੈ ਮਿਟੈ ਅੰਧਿਆਰਾ ॥

ਸੁਖੁ ਦੁਖੁ ਸਮ ਕਰਿ ਨਾਮੁ ਅਧਾਰਾ ॥

ਆਪੇ ਪਾਰਿ ਉਤਾਰਣਹਾਰਾ ॥

ਗੁਰ ਪਰਚੈ ਮਨੁ ਸਾਚਿ ਸਮਾਇ ॥

ਪ੍ਰਣਵਤਿ ਨਾਨਕੁ ਕਾਲੁ ਨ ਖਾਇ ॥੪੯॥

ROUND 3 - TEAM 3 – ANSWER 3

ਨਾਮ ਤਤੁ ਸਭ ਹੀ ਸਿਰਿ ਜਾਪੈ ॥

ਬਿਨੁ ਨਾਵੈ ਦੁਖੁ ਕਾਲੁ ਸੰਤਾਪੈ ॥

ਤਤੇ ਤਤੁ ਮਿਲੈ ਮਨੁ ਮਾਨੈ ॥

ਦੂਜਾ ਜਾਇ ਇਕਤੁ ਘਰਿ ਆਨੈ ॥

ਬੋਲੈ ਪਵਨਾ ਗਗਨੁ ਗਰਜੈ ॥

ਨਾਨਕ ਨਿਹਚਲੁ ਮਿਲਣੁ ਸਹਜੈ ॥੫੦॥

ROUND 3 - TEAM 4 – QUESTION 3

ਕੁਬੁਧਿ ਚਵਾਵੈ ਸੇ ਕਿਤੁ ਠਾਇ ॥
ਕਿਉ ਤਤੁ ਨ ਬੂਝੈ ਚੇਟਾ ਖਾਇ ॥

COMPLETE THIS PARAGRAPH FROM SIDDH GOSHT

BONUS POINT – TELL THE NEXT PARAGRAPH

ROUND 3 - TEAM 4 – ANSWER 3

ਕੁਬੁਧਿ ਚਵਾਵੈ ਸੇ ਕਿਤੁ ਠਾਇ ॥

ਕਿਉ ਤਤੁ ਨ ਬੂਝੈ ਚੇਟਾ ਖਾਇ ॥

ਜਮ ਦਰਿ ਬਾਧੇ ਕੇਇ ਨ ਰਾਖੈ ॥

ਬਿਨੁ ਸਬਦੈ ਨਾਹੀ ਪਤਿ ਸਾਖੈ ॥

ਕਿਉ ਕਰਿ ਬੂਝੈ ਪਾਵੈ ਪਾਰੁ ॥

ਨਾਨਕ ਮਨਮੁਖਿ ਨ ਬੂਝੈ ਗਵਾਰੁ ॥੫੫॥

ROUND 3 - TEAM 4 – ANSWER 3

ਕੁਬਧਿ ਮਿਟੈ ਗੁਰ ਸਬਦੁ ਬੀਚਾਰਿ ॥

ਸਤਿਗੁਰੁ ਭੇਟੈ ਮੋਖ ਦੁਆਰ ॥

ਤਤੁ ਨ ਚੀਨੈ ਮਨਮੁਖੁ ਜਲਿ ਜਾਇ ॥

ਦੁਰਮਤਿ ਵਿਛੁੜਿ ਚੇਟਾ ਖਾਇ ॥

ਮਾਨੈ ਹੁਕਮੁ ਸਭੇ ਗੁਣ ਗਿਆਨ ॥

ਨਾਨਕ ਦਰਗਹ ਪਾਵੈ ਮਾਨੁ ॥੫੬॥